

Proudly Serving Placer County Residents Since 1957

IN THIS ISSUE

**2006
Irrigation Water
Report**



PCWA UPDATE

Placer County Water Agency

Volume 20 • Number 2 • April-May, 2006

Plenty of Water, But PCWA Faces Delay in Temporary AR Pumps

With a Sierra snowpack at 125 percent of average (as of Apr. 1), there will be an abundance of water this year in Placer County.

Delivery of the water is another matter. Storm damage has delayed the Bureau of Reclamation's annual installation of temporary pumps on the American River. Usually in place by April, the pumps may not be operational until mid-June.

Most customers are supplied with water that flows to PCWA via the PG&E system from the Yuba and Bear rivers. The agency supplements this supply through the temporary American River pumps.

Pumps are a Key Link

The temporary pumps have become increasingly important with the continued growth in western Placer County. This source is especially critical during periods of hot weather and high demand.

This should be the final year for the temporary pumps. A permanent pump station and river restoration project on the North Fork American River near Auburn is now in progress. The pumps should be operational next year and the entire project complete in two years.



The East Perry Canal in rural Loomis

PCWA's Access to Canals Must be Protected

Customers are reminded that PCWA canal operators and cleaning crews must have access to the canal system.

While canal operation and maintenance is a routine matter for many longtime residents, newer residents are sometimes surprised at these activities. Use of heavy equipment is often required for the removal of silt and debris from canals.

Raising Public Awareness

Deputy Director of Field Services Rick Allan said staff members are increasingly involved in public contact and education regarding canal operation and maintenance.

In most cases, the agency holds easements on private property for the operation and maintenance of the public water supply. The cooperation of all property owners is appreciated.

East Loomis Basin Canal Study Moves Forward

Agency Works to Make Canal System More Efficient

How might the East Loomis Basin Canal System be made more efficient to better serve the irrigation water needs of approximately 300 customers?

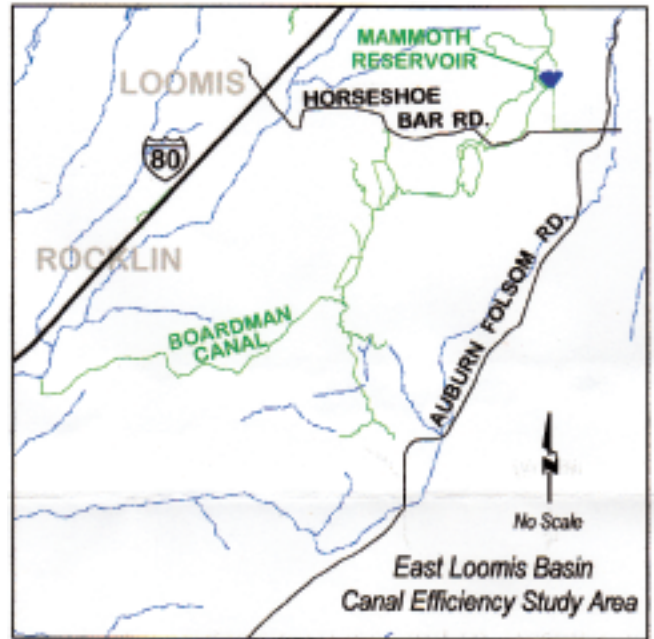
An extensive study of a section of the PCWA canal network located east of Interstate 80 and south of Horseshoe Bar Road began in 2004 and will continue through this summer and fall.

Supplied Through Mammoth Reservoir

PCWA supplies about 10,000 acre-feet of water per year to the East Loomis Basin through Mammoth Reservoir and the Boardman, West Perry, East Perry, Turner, Laird, Yankee Hill, Baughman, Ferguson and Stallman canals.

The ongoing study will identify water losses, define the environment of the canal system and recommend how the system should be improved. Twenty-six flow monitoring stations have been installed along canals and tributaries in the area.

As part of the ongoing study, PCWA is conducting a public outreach effort. A General Manager's Task Force has fostered community input and helped focus attention on issues important to local residents.



For information on the study, call the PCWA Customer Service Center at (530) 823-4850 or (800) 464-0030.

The Canals of Placer County

The PCWA canal system has grown from the Gold Rush when the area's first canals were built to supply water for local gold mines.

Today's PCWA system includes 165 miles of canals that carry water to more than 3800 irrigation water users, ranging from family gardens and farms to orchards, ranches, parks and golf courses.

The canal system also carries raw water to the agency's eight water treatment plants.

How to Contact Your Elected PCWA Board of Directors

PCWA is an independent public agency governed by an elected Board of Directors.

Your directors are:

DISTRICT 1, Pauline Rocucci

Roseville, (916) 782-2708

DISTRICT 2, Alex Ferreira
(2006 Board Chair)

Lincoln, (916) 645-2072

DISTRICT 3, Lowell Jarvis

Auburn, (530) 889-8836

DISTRICT 4, Mike Lee

Loomis, (916) 645-6705

DISTRICT 5, Otis Wollan

Colfax, (530) 346-7967

IN BRIEF

Water Rates Increase in 2006. The PCWA Board of Directors has approved water rate increases for 2006. Summer water service is up by 4 percent; winter water service will cost 7 percent more. For information on water rates and services, please contact the PCWA Customer Service Center.

Water for Zone 5. The PCWA Board of Directors declared on Apr. 6 that up to 15,000 acre-feet of irrigation water will be available this year to agricultural water users in the Zone 5 service area west of Lincoln.

Fall Canal Outage Likely. It is anticipated that some canal outages and raw water service interruptions will occur during annual maintenance work conducted this Fall by PG&E and PCWA. Dates and locations will be announced when they become available.

Algae Control in Canals. Customers have been supportive of PCWA's algae control program, which is now entering its third year. Operated under a state permit, the program is conducted by licensed applicators who use Cutrine-Plus to prevent overgrowth of aquatic weeds that can clog canals and affect water deliveries.

PCWA Planning \$2.2 Million in Zone 3 Improvements This Year

In 2006, PCWA is placing a strong emphasis on upgrading key sections of the Zone 3 water delivery system through the upper foothills.

Zone 3 stretches from Alta to Lake Theodore, just north of Auburn, and includes 33 miles of canals and various flumes, tunnels and pipelines. Its main artery, the Boardman Canal, carries water to both retail and wholesale water customers in Zone 3 and also supplies the downstream Zone 1 conveyance system.

The water agency has budgeted \$2.2 million this year for Zone 3 improvements, including \$750,000 for continued work on the Secret Town Pipeline and \$1.2 million for the Gold Run Pipeline. Both pipelines run through remote and difficult terrain where repair and replacement can be difficult and costly.

History of Zone 3

With the support and encouragement of area residents, PCWA purchased the old Upper Placer Water System from PG&E and formed Zone 3 in 1982.

For more than two decades, the agency has invested increasing amounts of money to add reliability to the old system. Over the past two years, the agency has budgeted \$1.4 million in Zone 3 improvements.

Some of the most difficult problems in the area have been failures of old Techite pipeline, a fiberglass product that was installed in the 1970s before PCWA took ownership of the water system.

The 9600-foot Gold Run Pipeline included more than 4000 feet of Techite pipe while the 2500-foot Secret Town Pipeline included about 600 feet of Techite. The agency has replaced sections of these old pipelines and is working to replace remaining sections as soon as possible.



Upgrading Old Pipelines in Zone 3
PCWA maintenance crews in early April repaired a leaking section of the Gold Run Pipeline near the railroad tracks in Gold Run, above. A section of failed Techite pipe on the Secret Town Pipeline is pictured, below.



Helpful Tips for Canal Water Users

The irrigation seasons normally opens in mid-April (in May at the higher foothill elevations) and runs into October.

PCWA does everything it can to avoid service interruptions during the irrigation season, but due to the nature of the water system, temporary outages can be necessary.

Irrigation water customers should be prepared to deal with outages resulting from emergencies or planned maintenance. PCWA notifies customers in advance of planned maintenance outages but notification is not always possible in emergencies.

Know the Location of Your Water Connection

Customers should know where water connections are located and how to turn them off and on. Customers should be familiar with the operation of their own private water systems. The agency recommends that raw water users consider onsite storage and the installation of automatic low water cutoff valves on private pump systems.

Your Home Water System: Get to Know it

- Where is your water connection?
- Do you share a line with others?
- Do you have adequate water storage on your property?

Maintain your private water system

- Is your delivery pipe in good condition?
- Is your delivery box clear and unobstructed?

Raw Water Measurements

ACRE-FOOT

An amount of water that would cover one acre to a depth of one foot. One acre-foot equals 325,850 U.S. gallons, or 43,560 cubic feet.

MINERS' INCH

An amount equal to 1.5 cubic feet or 11.22 gallons per minute.

CUBIC FOOT (CF)

An amount equal to 7.48 gallons

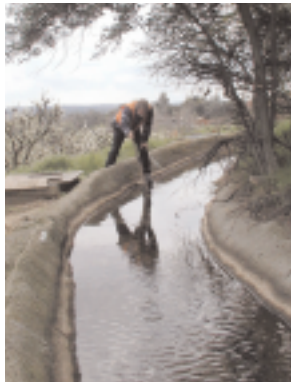
CUBIC FEET PER SECOND (CFS)

An amount equal to a flow of 449 gallons per minute



**PLACER COUNTY
WATER AGENCY**

144 Ferguson Road
(P.O. Box 6570)
Auburn, California 95604



**Annual Newsletter
to
Irrigation Water Customers**

Public Meetings

The Placer County Water Agency Board of Directors meets regularly the first and third Thursdays of each month at 2 p.m. in the Placer County Board of Supervisors chambers, 175 Fulweiler Avenue, in Auburn. The public is welcome.

www.pcwa.net

This newsletter is published as a public service of the
**PLACER COUNTY
WATER AGENCY**

144 Ferguson Road (P.O. Box 6570)
Auburn, California 95604
(530) 823-4850
(800) 464-0030

General Manager: David A. Breninger
Newsletter Editor: Dave Carter

FOR INFORMATION on irrigation water service, PCWA customers are invited to contact the PCWA Customer Service Center at (530) 823-4850 or (800) 464-0030.